

Utilizing Simulation as an Innovative Learning Strategy to Connect the Dots between Social Determinants of Health and Diabetes Management

Christine Sump, DNP, MSN, RN, CNE

Donna Rose, DNP, MSN, RN

Nicole Frazier, MSN, RNC-OB



OLD DOMINION UNIVERSITY

School of Nursing

1

Conflict of Interest and Disclosures: Neither the planner or presenters have any real or perceived vested interest that relates to this presentation.



2

2

Learner Outcomes



Recognize Social Determinants of Health (SDOH) and its impact on Diabetes management.



Describe the integration process of Social Determinants of Health into an Adult Health course that includes didactic and simulation components.



Examine the design of simulation experience that integrates SDOH with assessment and care of the diabetic patient.



Discuss teaching strategies to promote assessment and evidence-based practice when providing nursing care to the diabetic patient.



3

3

Social Determinants of Health (SDOH)



5 Domains

- Economic stability
- Education access and quality
- Healthcare access and quality
- Neighborhood and built environment
- Social & Community Context

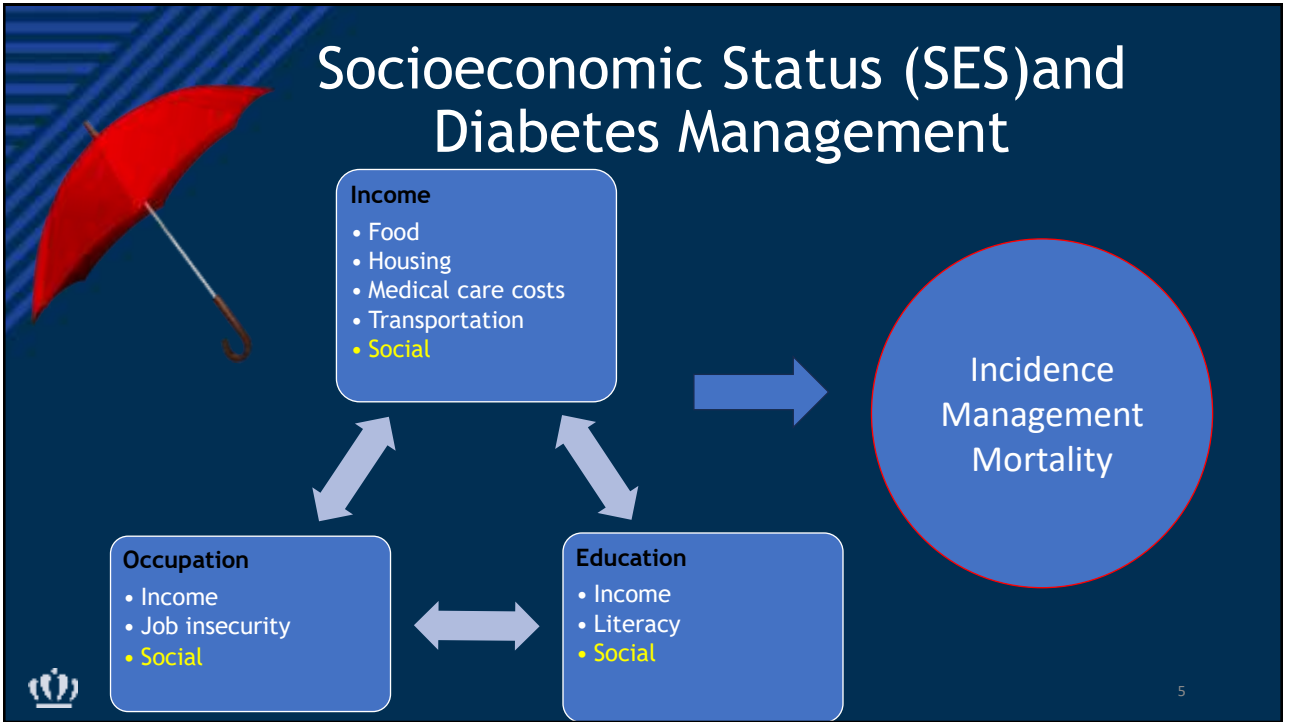
• Healthy People 2030, U.S. Department of Health and Human Services, Office of Disease Prevention and Health Promotion. Retrieved [date graphic was accessed], from <https://health.gov/healthypeople/objectives-and-data/social-determinants-health>



4

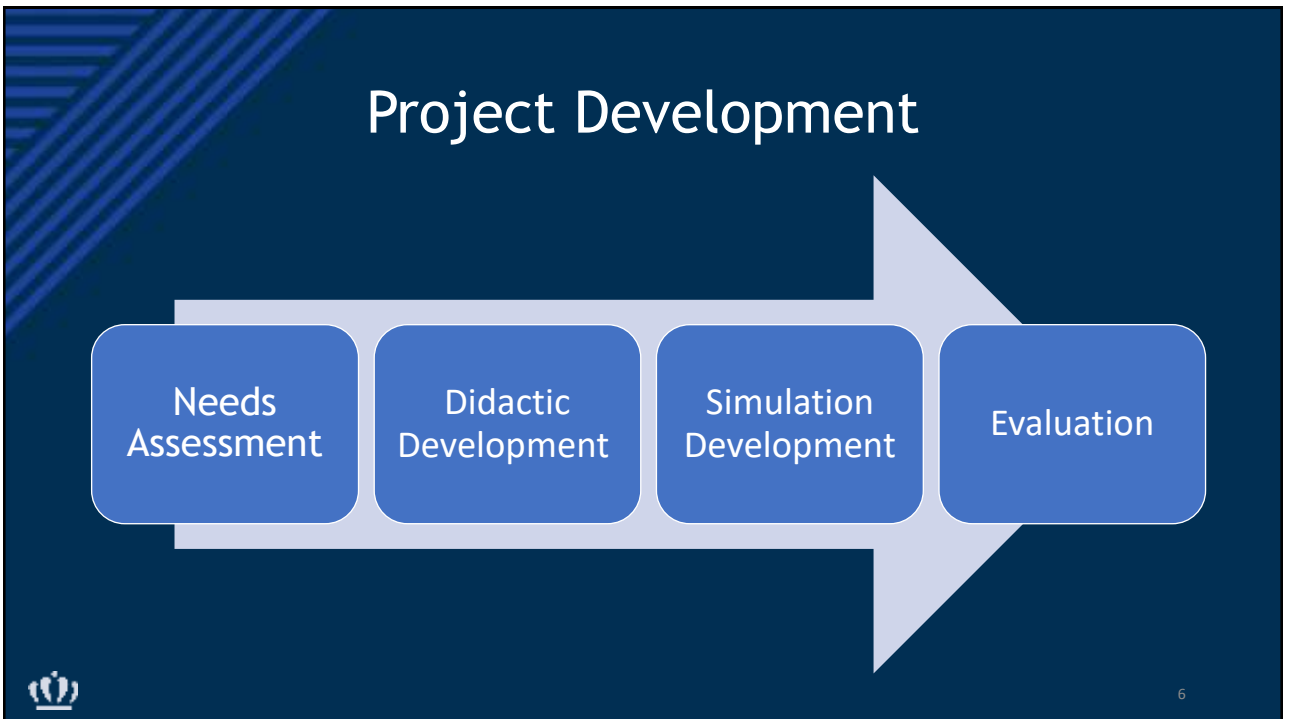
4

Socioeconomic Status (SES) and Diabetes Management



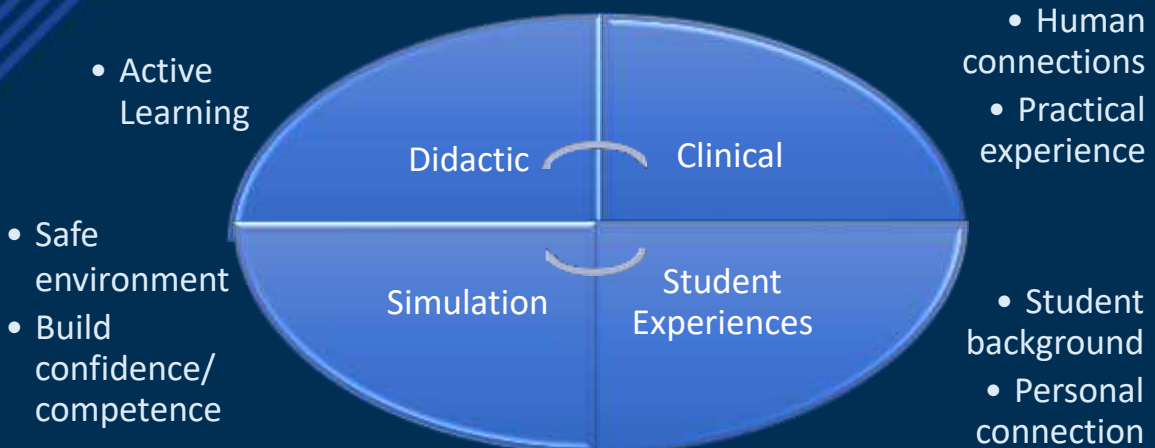
5

Project Development



6

Reimagining the Future of Academic Nursing



7

7

Didactic Components

- Lecture and discussion
- Diabetes pathophysiology
- Barriers to care
 - SDOH
- Complications
- Pharmacologic and non pharmacologic treatments
- Group work—shared documents
 - Case studies
 - Tables



8

8

Putting it Together with Simulation



Demonstrate assessment of diabetic patient using evidence-based practice



Recognize Social Determinants of Health during patient interview



Identify expected assessment and diagnostic findings for patient with hypoglycemia



Utilize principles of EBP to care for patient experiencing hypoglycemia



Demonstrate interprofessional communication using SBAR



SDOH and Diabetes Simulation

Student Preparation

Pre-Brief

Scenario

Debrief

PREBRIEFING: PREPARATION AND BRIEFING
Criteria Necessary to Meet this Standard:

Integrating Content	Integrate content related to the simulation and the simulation scenario into the prebriefing process.	Integrate a prebriefing process into the simulation scenario.	Integrate a prebriefing process into the simulation scenario.
Preparation Content	Identify preparation content related to the simulation scenario.	Identify preparation content related to the simulation scenario.	Identify preparation content related to the simulation scenario.
Setting Content	Set the scene for the simulation scenario.	Set the scene for the simulation scenario.	Set the scene for the simulation scenario.

THE DEBRIEFING PROCESS
Criteria Necessary to Meet this Standard:

Debriefing process designed to meet the needs of the simulation scenario.	Debriefing process designed to meet the needs of the simulation scenario.
Debriefing process designed to meet the needs of the simulation scenario.	Debriefing process designed to meet the needs of the simulation scenario.

Competency Based Outcomes

Based on AACN 2021 Domains, Competencies, and Sub-Competencies for Entry-level Professional Nursing

- **AACN Domain 2: Person-Centered Care**

- 2.3 Integrate assessment skills in practice.
 - 2.3c Perform a clinically relevant, holistic health assessment
- 2.4 Diagnose actual or potential health problems and needs.
 - 2.4c Prioritize problems/health concerns
- 2.5 Develop a plan of care.
 - 2.5c Prioritize care based on best evidence.
 - 2.5a Engage the individual and the team in plan development.
 - 2.5d Incorporate evidence-based interventions to improve outcomes and safety.
- 2.7 Evaluate outcomes of care
- **AACN Domain 5: Quality and Safety**
- 5.2 Contribute to a culture of patient safety.

- **AACN Domain 6: Interprofessional Partnerships**

- 6.1 Communicate in a manner that facilitates a partnership approach to quality care delivery.
 - 6.1f Communicate as informed by legal, regulatory, and policy guidelines



11

11

Validation Criteria

- Creighton Competency Evaluation Instrument (CCEI)©
- Simulation Effectiveness Tool - Modified
- Student surveys



12

12

Survey Results

↑ Overall knowledge about SDOH components

Insurance
Income
Resources
Culture



↑ Ability/Comfort in Assessing SDOH



13

13

References

- American Association of Colleges of Nursing (2021). *The essentials: core competencies for professional nursing education*. <https://www.aacnnursing.org/Portals/0/PDFs/Publications/Essentials-2021.pdf>
- Cole, H. (2023). Competency-based evaluations in undergraduate nursing simulation: A state of the literature. *Clinical Simulation in Nursing*, (76), 1-16. <https://doi.org/10.1016/j.ecns.2022.12.004>.
- Creighton University (2020). *Competency evaluation: Creighton competency evaluation instrument*. <https://www.creighton.edu/nursing/academics/competency-evaluation-instrument>
- Frier, A., Devine, S., Barnett, F., McBain-Rigg, K., & Dunning, T. (2022). Incorporating social determinants of health into individual care—a multidisciplinary perspective of health professionals who work with people who have type 2 diabetes. *PLoS one*, 17(8), e0271980.
- Hill-Briggs, F., Adler, N., Berkowitz, S., Chin, M., Gary-Webb, T., Navas-Acien, A., Thornton, P., Haire-Joshu, D. (2021). Social determinants of health and diabetes: A scientific review. *Diabetes Care*, 44(1), 258–279. <https://doi.org/10.2337/dci20-0053>
- INACSL (2023). *Healthcare simulation standards of simulation*. <https://www.inacsl.org/healthcare-simulation-standards-ql>
- Kiernan L. C. (2018). Evaluating competence and confidence using simulation technology. *Nursing*, 48(10), 45–52. <https://doi.org/10.1097/01.NURSE.0000545022.36908.f3>
- Levy, N., Park, A., Solis, D., Hu, L., Langford, A., Wang, B., & Rogers, E. (2022). Social determinants of health and diabetes-related distress in patients with insulin-dependent type 2 diabetes: cross-sectional, mixed methods approach. *JMIR formative research*, 6(10), e40164. <https://doi.org/10.2196/40164>
- McDermott, D., Ludlow, J., Horsley, E., Meakim, C. (2021). Healthcare simulation standards of best practice TM prebriefing: Preparation and briefing. *Clinical Simulation in Nursing*, 58(1) 9-13. <https://doi.org/10.1016/j.ecns.2021.08.008>.
- American Diabetes Association. (2022). Statistics about diabetes. <http://www.diabetes.org/diabetes-basics/statistics/>
- Thornton, M., Persaud, S. (2018). Preparing today's nurses: Social determinants of health and nursing education. *The Online Journal of Issues in Nursing*, 23(3). <https://doi.org/10.3912/OJIN.Vol23No03Man05>
- Walker, R., Gebregziabher, M., Martin-Harris, B., Egede, L. (2014). Independent effects of socioeconomic and psychological social determinants of health on self-care and outcomes in Type 2 diabetes. *Gen Hosp Psychiatry*, 36(6), 662–668. doi: 10.1016/j.genhosppsych.2014.06.011. <https://europepmc.org/abstract/MED/25103544>
- World Health Organization. (2022). Social determinants of health. https://www.who.int/health-topics/social-determinants-of-health#tab=tab_3

14

Questions?



OLD DOMINION UNIVERSITY

School of Nursing