

# Advancing Compassionate Care: Our Journey through Graduate Palliative Care Nursing Education

Carrie L. Cormack, DNP, CPNP, FPCN, FAAN  
Kathleen Lindell, PhD, RN, ATSF, FAAN



College of Nursing | Changing What's Possible | [MUSC.edu/nursing](https://www.musc.edu/nursing)



# A little more about us...



**Carrie L. Cormack**  
**DNP, CPNP, FPCN, FAAN**



**Kathleen Lindell**  
**PhD, RN, ATSF, FAAN**



# Objectives

At the completion of this presentation, the learner will:

- **Examine** the development and implementation of a comprehensive palliative care (PC) curriculum within a college of nursing.
- **Identify** effective strategies for integrating PC principles into graduate-level nursing curricula, ensuring alignment with national competencies and standards.
- **Explore** innovative teaching methodologies that foster a deep understanding of PC concepts among graduate students.



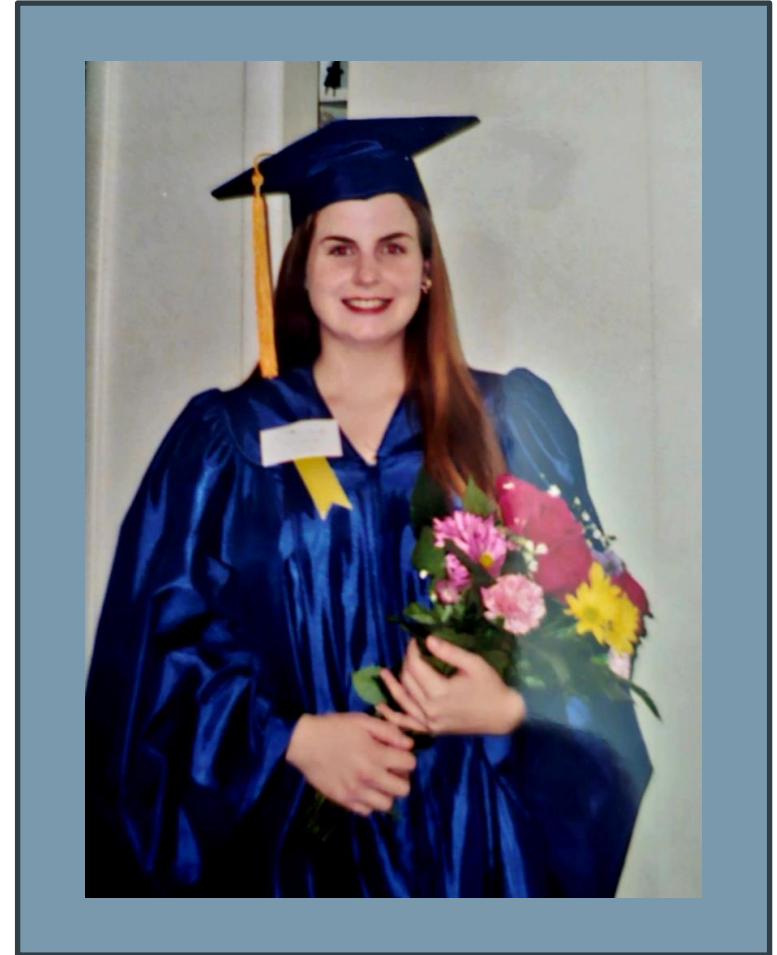
# Important Guidelines for Nursing & Palliative Care

- The Institute of Medicine's, *Dying in America* (2014)
- ANA and HPNA *The Call for Action* (2017)
- *Clinical Practice Guidelines for Quality Palliative Care* (NCP Guidelines) (2018)
- *New AACN Essentials* (2021)

*COVID-19 highlighted PC as nurses were called upon to advocate, care for, and promote quality of life for patients, who often were dying alone.*



# Meet Beth and Jessica



# MUSC Palliative Care

- Leadership buy-in and support
- Model of Excellence Clinical Team
- Interprofessional collaboration



- Endowed Chair of Palliative Care
- Distinguished Professorship in Palliative Care
- Annual Palliative Care Showcase
- Palliative Care Education Coordinator





# Transforming Palliative Care Nursing Education

Carrie L. Cormack, DNP, APRN, CPNP, Christina McDaniel, DNP, RN  
Emily E. Johnson, PhD, Kathleen O. Lindell, PhD, RN, ATSF, FAAN

College of Nursing, Medical University of South Carolina  
Charleston, South Carolina



## PURPOSE

- Since 2017, MUSC College of Nursing (CON) has fully invested in palliative care (PC) education for every nursing student and faculty.
- MUSC hospital administration and nursing leadership recognized need for increased PC education for nurses caring for patients with serious illness and at end-of-life.
- CON PC faculty was asked to expand PC education to bedside nurses on an inpatient unit having a high population of palliative-appropriate patients.

## STRENGTH of the EVIDENCE

The following policies promote prioritizing PC education:

- The Institute of Medicine's, *Dying in America* (2014)
- ANA and HPNA *The Call for Action* (2017)
- New *AACN Essentials* (2021)

*COVID-19 highlighted this need as nurses were called upon to advocate, care for, and promote quality of life (QOL) for patients, who often were dying alone.*

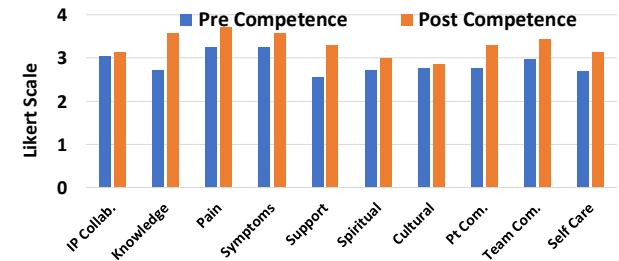
## IMPLEMENTATION STRATEGIES

1. Palliative Care Practices of Registered Nurses Survey completed by nurses (25) evaluating nursing end-of-life care core competence and gaps in education.
2. Nurses provided access to the End-of-Life Nursing Education Curriculum (ELNEC) & ELNEC modules were completed independently.
3. Seven "Champion" nurses identified to participate in three-hour in-person communication training.
4. Post-survey completed (7) to re-assess nursing competence and educational needs.

MUSC College of Nursing is contributing to PRIMARY PALLIATIVE CARE in bedside nursing by providing palliative care education to nurses caring for patients with serious illness and at end-of-life.

## PRACTICE CHANGE

Nurse Competence of PC Skills



- Nursing competence increased in *all* areas following self-guided ELNEC and in-person communication training.
- Areas of Knowledge of End of Life Decision-Making and Assessing Patient/Family Support and Resources were highest areas of improvement.

## POLICY IMPLICATIONS

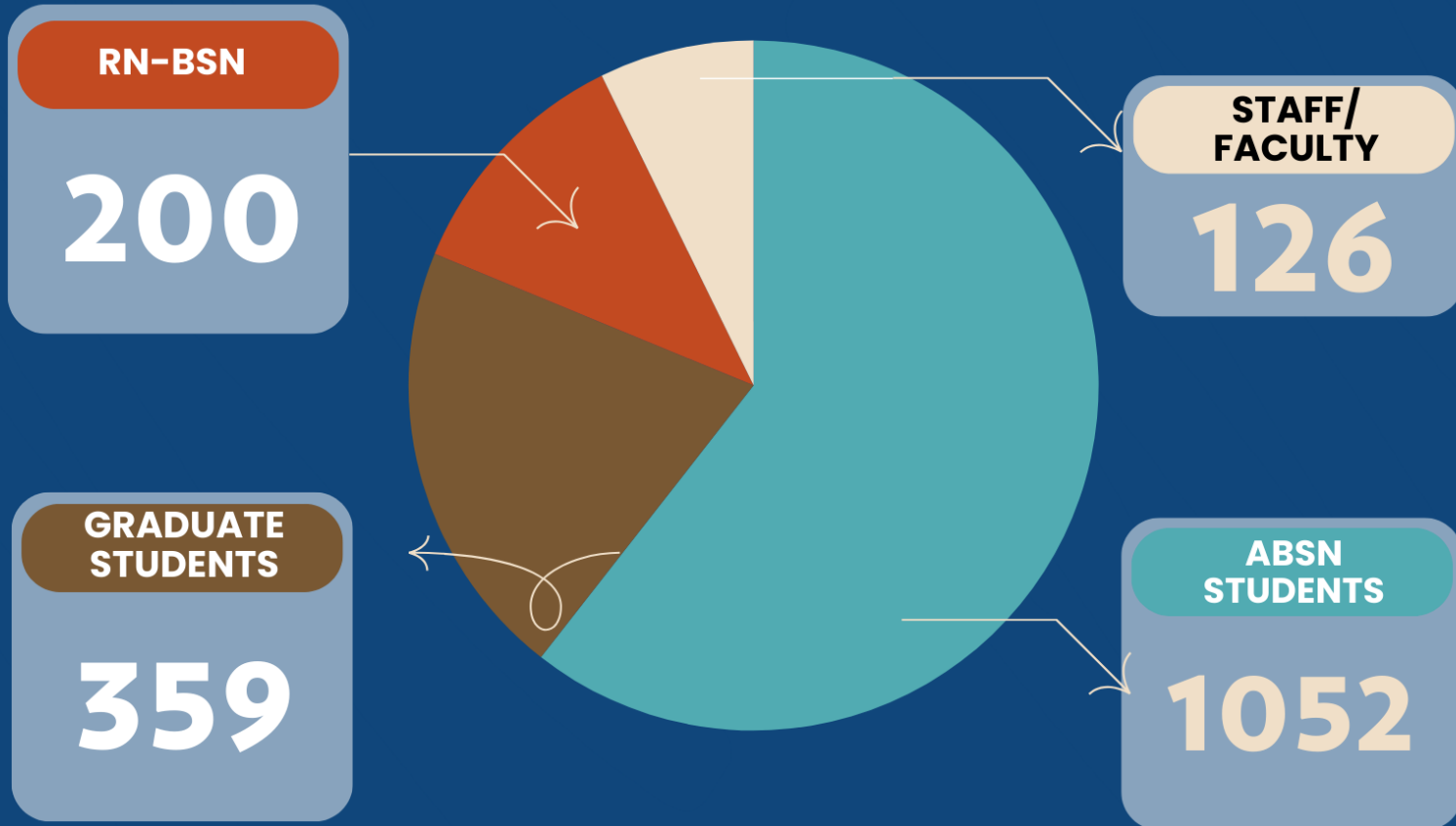
- MUSC CON is at the intersection of policy change in filling the gap of prioritizing PC education to improve the QOL for patients with serious illness and their families.
- PC education increased competence for MUSC nurses who received PC education and communication skills.
- Champion nurses reported that in-person communication training was very helpful in navigating conflict and helped them to better advocate for patients in their care.

## ACKNOWLEDGEMENTS

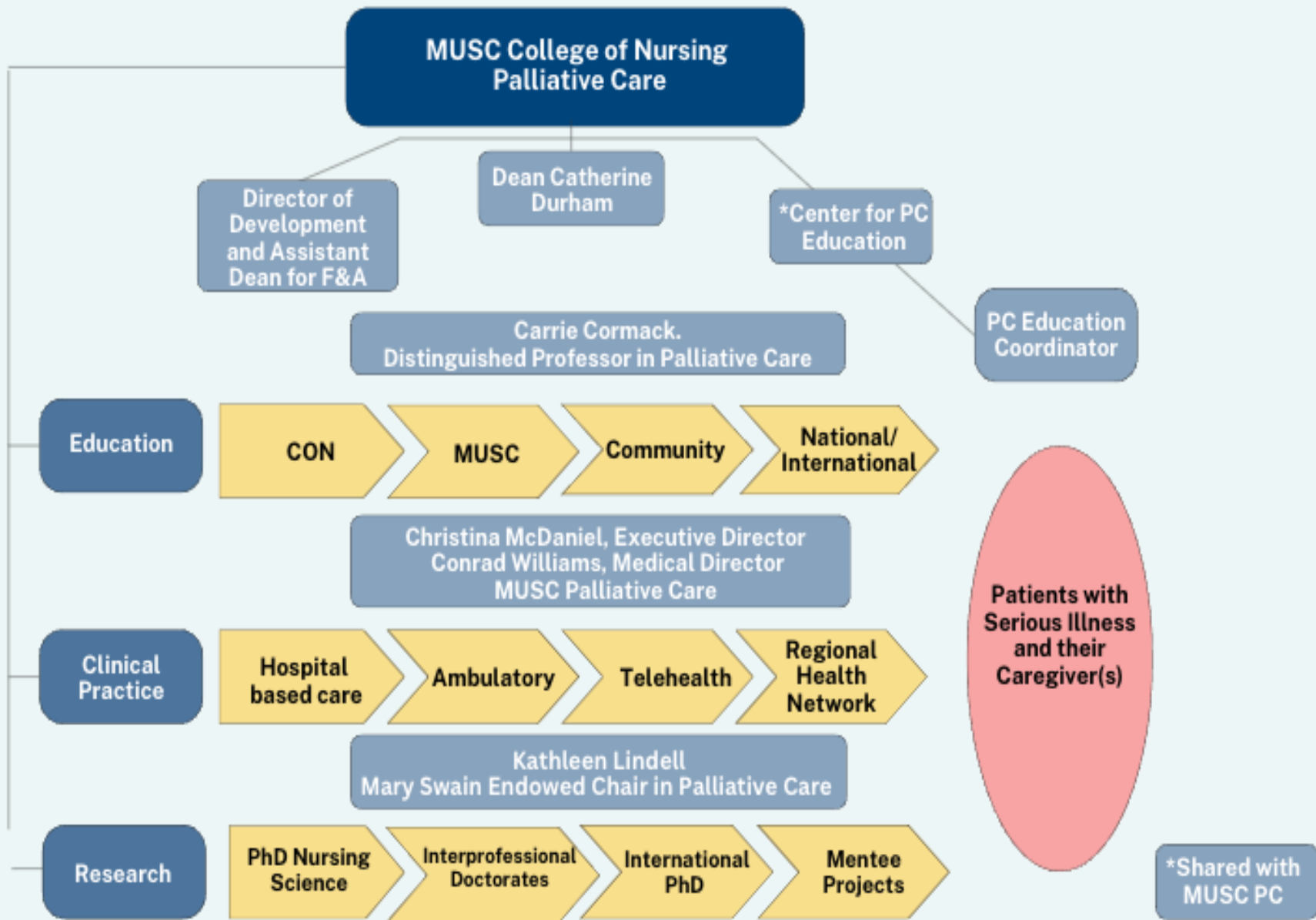
MUSC Palliative Care team and the ELNEC project



# Completed ELNEC-2023







# GRADUATE

## Palliative Care Initiatives at CON

**BSN/MSN TO DNP**

**1st** Post MSN  
to DNP in  
Palliative Care in  
the USA

**PHD**

International PhD  
with focus in  
PC - 2025

**ALL GRADUATE  
STUDENTS**

- Elective palliative care courses
- Palliative Care Showcase
- APP Externship



# The Graduate Student Experience:

- Relias Graduate Curriculum
- Clinical hours
- PBL content
- Learning Intensives content
- Advanced Communication Training



# Elective Graduate Student Opportunities

- Palliative Care APP Externship
- Clinical Electives
- PC Elective courses
- PC DNP projects



# Student feedback

- *"This course is so wonderful; I wish it was required for all of the programs. I loved that it taught me not just about palliative care but a lot about myself as a person and how I approach death".*
- *"This was a well-rounded course that truly covered all aspects of the Palliative APP role. I am looking forward to applying what I have learned and teaching/sharing my new knowledge with my team and leadership within the hospital".*



# Post-MSN to DNP in Palliative Care

- 1<sup>st</sup> DNP with Palliative Care focus in the country.
- Able to complete in five semesters.
- Exclusively online.
- Focuses on care for individuals with serious illnesses, emphasizing respect for patients' and families' beliefs, values, and choices.
- Includes 2 specialty palliative care courses.
- Students choose a DNP project in Palliative Care,
- Clinical/ Residency hours with Palliative Care clinical experts,
- Offers student learner to complete eligibility to sit for HPCC certification.

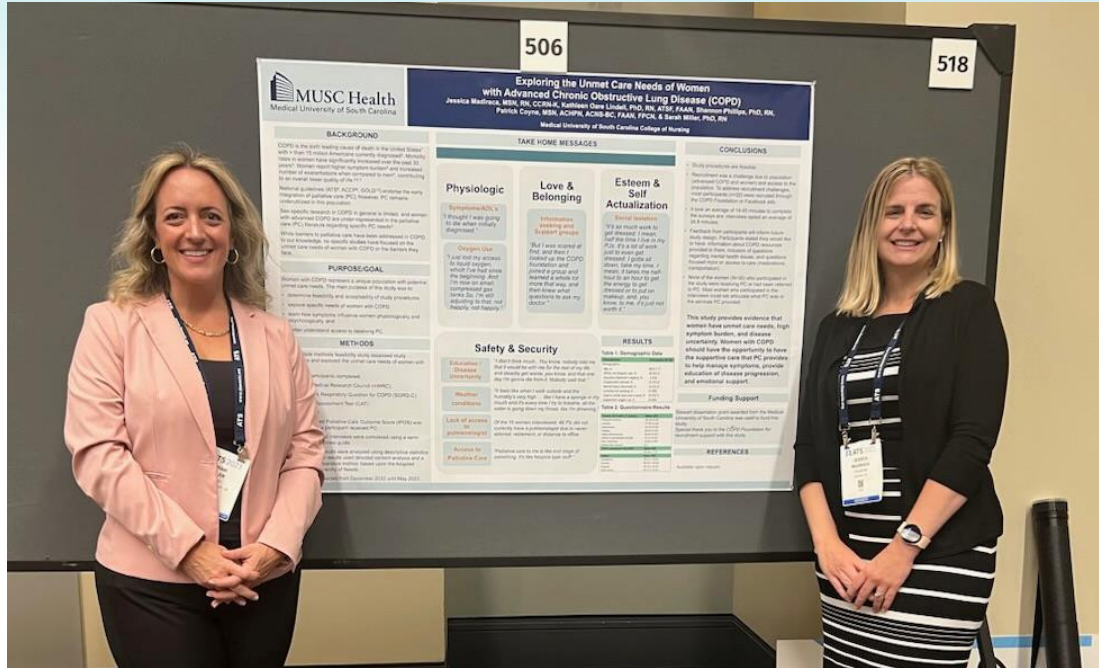


# Back to Beth and Jessica

*“A Standard Practice Protocol for Addressing Depression in a Hospice Setting”*



# Jessica



JOURNAL OF PALLIATIVE MEDICINE  
Volume XX, Number XX, 2023  
© Mary Ann Liebert, Inc.  
DOI: 10.1089/jpm.2022.0356

Palliative Care Review  
Feature Editor: Vyjayanthi S. Periyakoti

Open camera or QR reader and scan code to access this article and other resources online.



## Palliative Care Interventions in Advanced Chronic Obstructive Pulmonary Disease: An Integrative Review

Jessica Madiraca, MSN, RN, CCRN-K,<sup>1</sup> Kathleen Lindell, PhD, RN, ATSF, FAAN,<sup>1</sup> Patrick Coyne, MSN, ACHPN, ACNS-BC, FAAN, FPCN,<sup>2</sup> and Sarah Miller, PhD, RN<sup>1</sup>

## Feature Article

# Palliative Care Needs of Women With Advanced Chronic Obstructive Pulmonary Disease

## A Mixed Methods Study

Jessica Madiraca, PhD, RN ○ Kathleen Lindell, PhD, RN, ATSF, FAAN ○  
Shannon Phillips, PhD, RN ○ Patrick Coyne, MSN, ACHPN, ACNS-BC, FPCN ○  
Sarah Miller, PhD, RN

Downloaded from <http://journals.lww.com/jpm> by 172.16.1.107 on 08/08/2023







# MUSC PhD in Nursing Science

## PhD Faculty Palliative Care Interests



- Advanced Lung Disease
- Pulmonary Fibrosis
- Nurse led PC
- Caregivers



- Advanced Lung Disease
- COPD
- Telehealth
- Rural



- Wound
- Mindfulness/Breathing
- Loneliness
- Caregivers



- Alzheimer's Disease & Related Dementias
- Caregivers
- Care Coordination



# Where do we go from here...



- International partnerships
- International PhD
- Global Health projects



# In summary

- Need assessment
- Leadership and faculty buy-in
- Explore funding opportunities
- Collaborate with specialists
- Utilize existing tools
  - Relias Curricula
  - ELNEC Faculty Corner
- Be open to feedback
- Keep growing



# Advancing Compassion



# For more information on Palliative Care at MUSC



# PC Resources

**ELNEC** - American Association of Colleges of Nursing. End-of-life nursing education consortium (ELNEC). – <https://www.aacnnursing.org/ELNEC>)

**CAPC** - Center to Advance Palliative Care  
<https://www.capc.org/>)’

**HPNA** - Hospice & Palliative Nurses Association  
<https://advancingexpertcare.org/HPNA/Default.aspx>

**HPCC** -Hospice & Palliative Credentialing Center  
<https://advancingexpertcare.org/HPNA/Certification/>

National Coalition for Hospice and Palliative Care  
<https://www.nationalcoalitionhpc.org>

**NHPCO** - National Hospice and Palliative Care Organization  
<https://www.nhpc.org/>

**Caring Info** – A program of NHPCO  
<https://www.caringinfo.org/>

**AAHPM** - American Academy of Hospice and Palliative Medicine  
<http://aahpm.org/>

[Courageous Parents Network](#)

[National Institute of Nursing Research](#)



# References

Balaguer, A., Martín-Ancel, A., Ortigoza-Escobar, D., Escribano, J., & Argemi, J. (2012). The model of Palliative Care in the perinatal setting: a review of the literature. *BMC pediatrics*, 12(1), 25–25. England: BioMed Central Ltd.

Center to Advance Palliative Care (CAPC, 2022). About Palliative Care. Retrieved February 23, 2022 from <https://www.capc.org/about/palliative-care/>.

Davies, B., Sehring, S. A., Partridge, J. C., Cooper, B. A., Hughes, A., Philp, J. C., Amidi-Nouri, A., et al. (2008). Barriers to Palliative Care for Children: Perceptions of Pediatric Health Care Providers. *Pediatrics (Evanston)*, 121(2), 282–288. Elk Grove Village, IL: Am Acad Pediatrics.

FEUDTNER, C., CHRISTAKIS, D. A., & CONNELL, F. A. (2000). Pediatric deaths attributable to complex chronic conditions : A population-based study of Washington State, 1980-1997. *Pediatrics (Evanston)*, 106(1), 205–209. Elk Grove Village, IL: American Academy of Pediatrics.

FEUDTNER, C., KANG, T. I., HEXEM, K. R., FRIEDRICHSDORF, S. J., OSENGA, K., SIDEN, H., FRIEBERT, S. E., et al. (2011). Pediatric Palliative Care Patients: A Prospective Multicenter Cohort Study. *Pediatrics (Evanston)*, 127(6), 1094–1101. Elk Grove Village, IL: American Academy of Pediatrics.

Field, M. J., & Behrman, R. E. (2003). *When children die improving palliative and end-of-life care for children and their families*. Washington, D.C: National Academy Press.

Janvier, A., Meadow, W., Leuthner, S. R., Andrews, B., Lagatta, J., Bos, A., Lane, L., et al. (2011). Whom are We Comforting? An Analysis of Comfort Medications Delivered to Dying Neonates. *The Journal of pediatrics*, 159(2), 206–210. Maryland Heights, MO: Elsevier Inc.

Liberman, D. B., Song, E., Radbill, L. M., Pham, P. K., & Derrington, S. F. (2016). Early introduction of palliative care and advanced care planning for children with complex chronic medical conditions: a pilot study: Early introduction of palliative care. *Child : care, health & development*, 42(3), 439–449.

Milstein, J. (2005). A Paradigm of Integrative Care: Healing with Curing Throughout Life, “Being with” and “Doing to.” *Journal of Perinatology*, 25(9), 563–568. United States: Nature Publishing Group.

National Hospice and Palliative Care Organization (NHPCO, 2016). An Explanation of Palliative Care. Retrieved February 2022, from <http://www.nhpco.org/palliative-care-4>.

Osenga, K., Postier, A., Dreyfus, J., Foster, L., Teeple, W., & Friedrichsdorf, S. J. (2016). A Comparison of Circumstances at the End of Life in a Hospital Setting for Children with Palliative Care Involvement Versus Those Without. *Journal of pain and symptom management*, 52(5), 673–680. United States: Elsevier Inc.

World Health Organization (2016). WHO Definition of Palliative Care. Retrieved February 23, 2022 from <http://www.who.int/cancer/palliative/definition/en/>

