

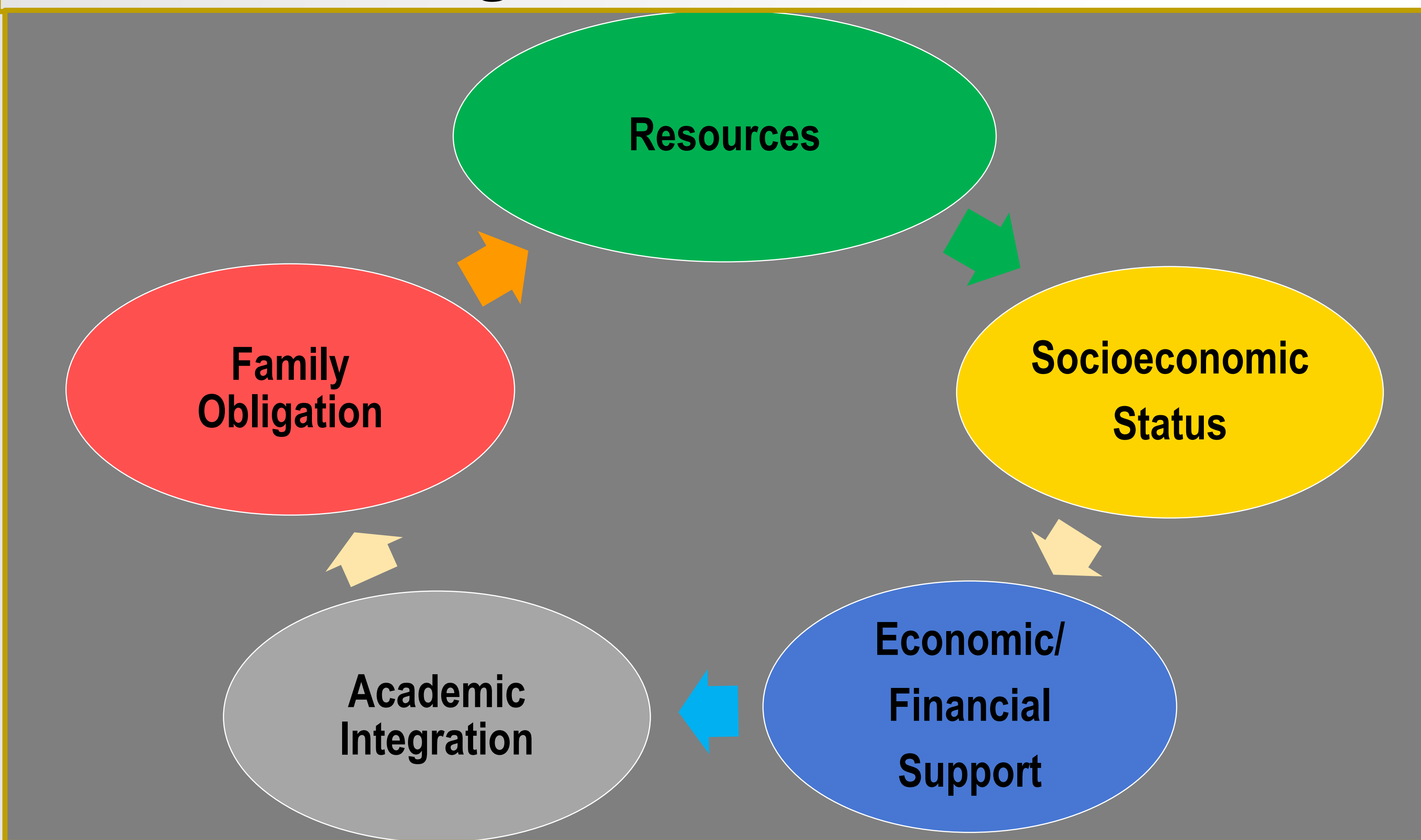
# Addressing the Social Determinants of Education Through R.E.A.C.H.

Vanessa Loyd, PhD, DNP  
Deans Fellow for Diversity, Equity and Inclusion

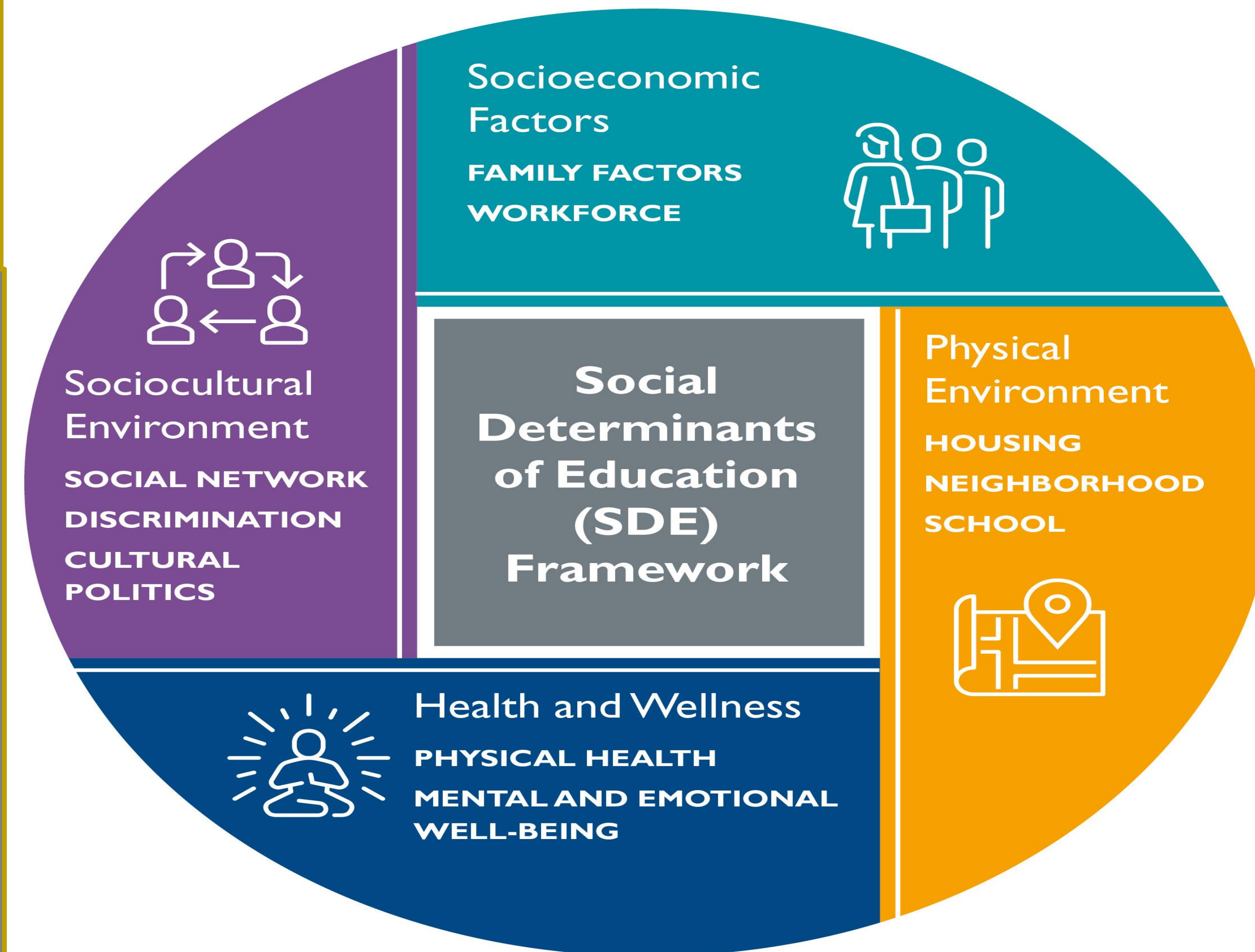
## Introduction

A diverse nursing workforce is critical to address Social Determinants of Health (SDOH). Nursing schools must continue to understand the challenges that influence student success and expand efforts to support diverse students (Institute of Medicine, 2021).

### Challenges that influence student success



## Conceptual Framework



## Implementation

# R.E.A.C.H.

### Resources

#### Community

- Food and Housing Assistance
- Utility Assistance
- Child and Family Assistance
- Financial Literacy
- Tax Preparation

### Engagement

#### Community

- Academic Integration
- Social Engagement

### Access

### Cost

- Community Commitment

### Holistic Approach

- Health Services
- Life Balance

### Recommendations

#### Shift to Creating a Structure of Support

- Remove barriers to Success
- Increase Access to Successful Interventions
- Outcome and Impact Measures R.E.A.C.H. model

## References



## Background/Significance

- Nursing retention is a challenge for nursing education programs and is a priority in improving academic
- Ethnicity, employment over 20 hours, and parental and caregiver responsibility for family members are negatively associated with academic performance and present a barrier to academic achievement, social and academic integration, and financial difficulties contributing to academic vulnerability
- Socioeconomic Status main factor (income, employment status, food, and housing insecurity) leading to a decline in student success
- Developing an innovative approach to improving student success is an ongoing process  
(Fortes et al., 2022; Osakwe et al., 2022; Schrum, 2015)

## Purpose/Aim

To evaluate how access to economic support for bachelor's degree nursing students contributes to student academic success

**Propose a framework, Social Determinant of Education-R.E.A.C.H. as a personalized model**

## Proposal Inquiry

**To what extent does economic support contribute to student success?**



## Addressing the Social Determinants of Education Through R.E.A.C.H.

Vanessa Loyd, PhD, DNP

### Biography

---

Vanessa Loyd, Ph.D., DNP, RN, is the Dean's Fellow for Diversity, Equity, and Inclusion (DEI) and a Teaching Professor at the University of Missouri-St. Louis College of Nursing (UMSLCON). Her educational and professional experiences have focused on advancing DEI and Social Justice. Dr. Loyd provides leadership in institutional strategic planning, including diversity programming, anti-oppression education, and creating an inclusive climate for faculty, staff, and students. Dr. Loyd serves as a liaison between the College of Nursing and the metropolitan community on issues of equity and inclusion to enhance the College's presence as a community partner committed to diversity and inclusion. DEI-specific initiatives led by Dr. Loyd include the development of Action 101, a series of self-paced DEI learning modules, and "Good Trouble Tuesday" Happy Hour, a monthly interactive discussion forum in which invited speakers and guests dialogue about current events and the historical context regarding DEI and social justice. Dr. Loyd was awarded the Inaugural Chancellor's Inclusive Excellence Award by the University of Missouri-St. Louis. In addition, Dr. Loyd was elected as a Leadership Fellow to the Missouri Nurses Association (MONA) Board of Directors and, most recently, as Chair of the MONA DEI Taskforce.

Dr. Loyd believes that everyone should be afforded equal access and opportunity to quality education regardless of their socio-economic status. She advocates for removing social barriers and the facilitation of student success by connecting them with resources that empower them with the requisite tools for approaching today and tomorrow more effectively and managing the demands of changing social conditions.

### Contact Information

---



Vanessa Loyd, PhD, DNP  
Deans Fellow, Diversity, Equity and Inclusion  
University of Missouri-St. Louis  
loydv@umsl.edu