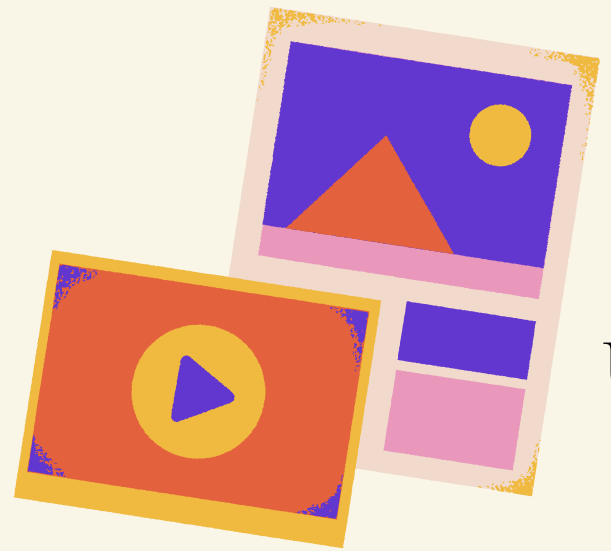




Empowering Nurse Educators: Interactive Teaching Strategies with ELNEC Undergraduate & New Graduate Guides



Andra Davis, PhD, MN, RN (she, her)
Associate Professor/ELNEC Co-Investigator
University of Portland School of Nursing and Health Innovations



Megan Lippe, PhD, MSN, RN (she, her)
Associate Professor/ELNEC Co-Investigator
UT Health San Antonio, School of Nursing

Objectives and Disclosures



- Explore new faculty resource guides aligned with ELNEC Undergraduate/New Graduate
- Brainstorm utilization of guide in nursing education programs

- Funding from Cambia Health Foundation
- Partnership with AACN

ELNEC History

2000

ELNEC Core
Curriculum Developed

2001

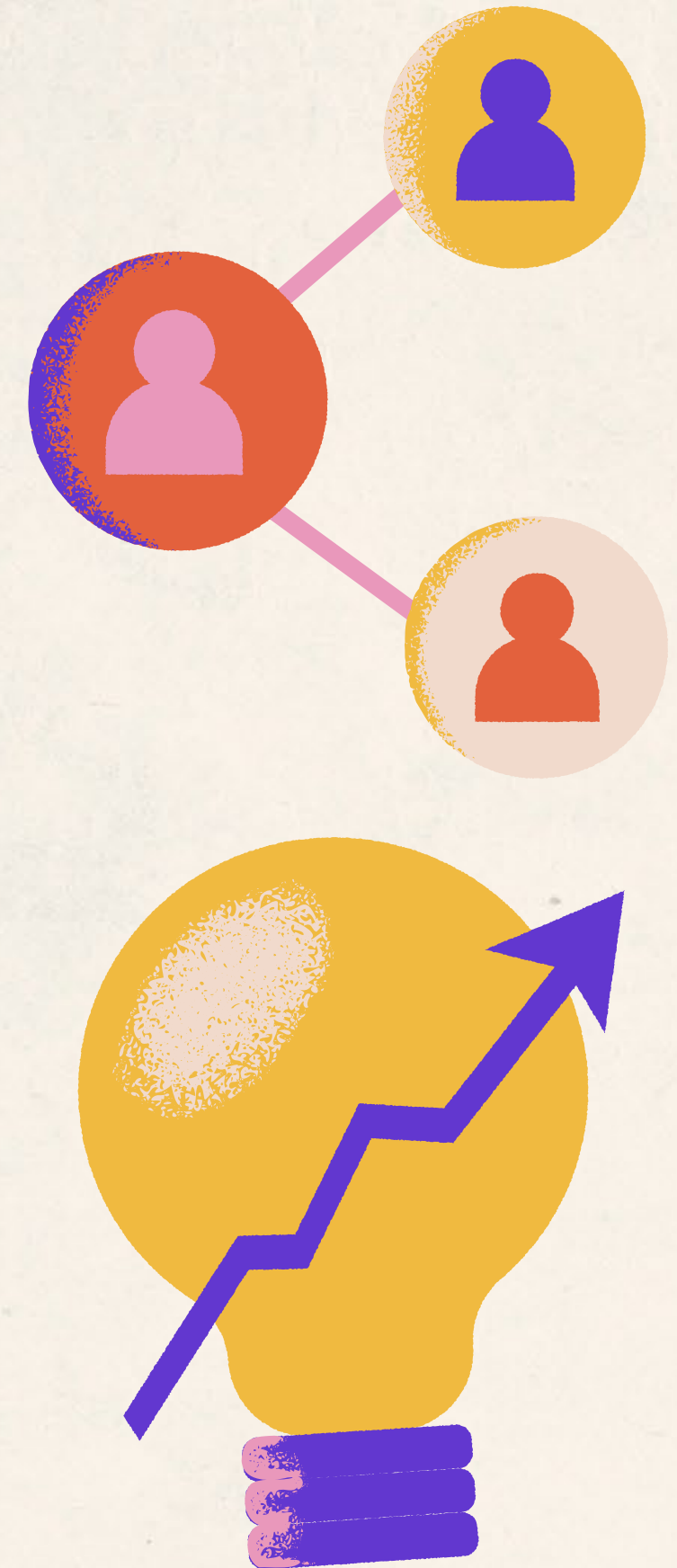
First National ELNEC
Course

2017

ELNEC Undergraduate/New
Graduate Developed
Updated in September 2023

2019

ELNEC Graduate
Developed



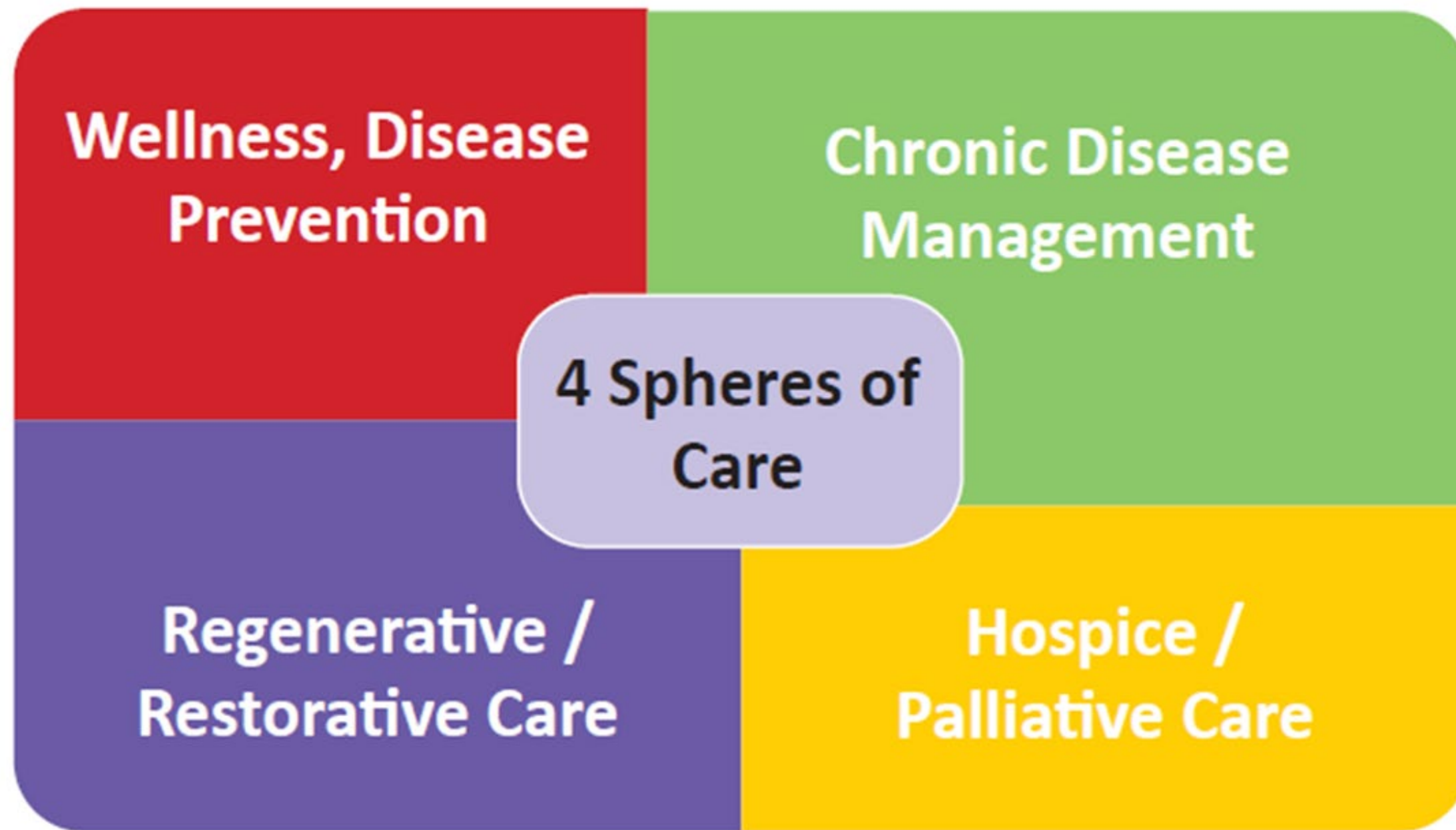
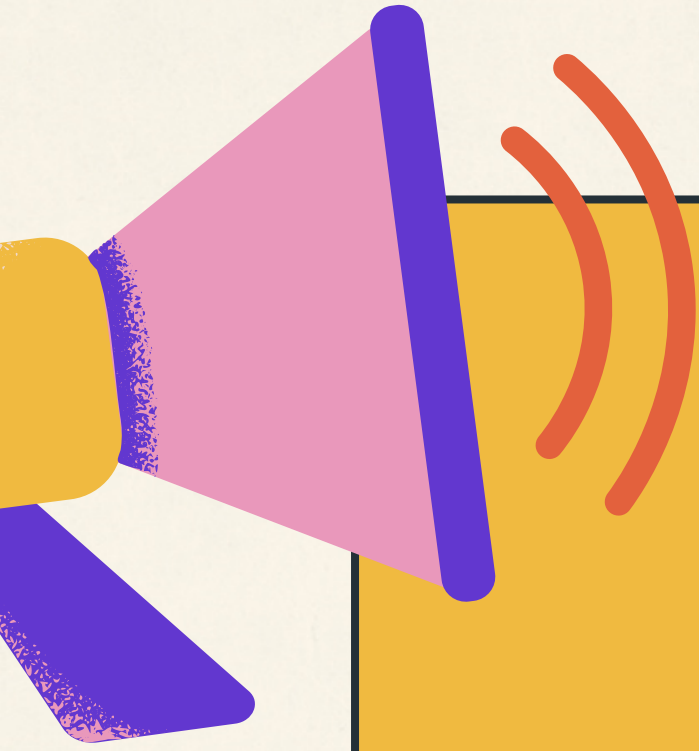


Figure 2: Four Spheres of Care



Competencies And Recommendations For Educating undergraduate Nursing Students



CARES 2nd ed.

15 competency statements for entry-level nursing students

G-CARES 2nd ed.

12 competency statements for advanced-level students

SINCE 2000



ELNEC

END-OF-LIFE NURSING EDUCATION CONSORTIUM

Advancing Palliative Care

ELNEC Undergraduate/New Graduate

1211 schools

ELNEC Graduate

406 schools

ELNEC Faculty Corner

Welcome Faculty!

Welcome to the ELNEC Faculty Corner!

This webpage is dedicated to supporting advancement of palliative nursing care education in schools of nursing. Through the AACN and ELNEC partnership and funding from Cambia Health Foundation, our goal is to strengthen the workforce in the care of patients and families with serious illness.

The ELNEC Faculty Corner is a repository of regularly updated educational resources focusing on the Palliative/Hospice/Supportive Sphere of Care. We recognize there are many exemplary educational efforts across the country and invite you to contribute to this repository. Your resources posted on the ELNEC Faculty Corner are considered scholarship of teaching. Contact ELNEC@coh.org to share any of your creative work!

We are excited to offer Regional Support Chairs within geographic regions. These faculty leaders can support you in considering how to teach students about the unique palliative care needs within your local, diverse communities while also ensuring adherence to state regulatory requirements for academic programs. [Look up your Regional Support Chair here.](#)

In Partnership!



Andra Davis, PhD, MN, RN
Associate Professor
ELNEC Co-Investigator
University of Portland
School of Nursing and
Health Innovations
davisa@up.edu



Megan Lippe, PhD, MSN, RN, ANEF, FAAN
Associate Professor
ELNEC Co-Investigator
UT Health San Antonio
School of Nursing
lippe@uthscsa.edu



Teaching Resources

Our Schools of Nursing Faculty Corner is constantly adding new resources to support palliative care education for undergraduate and graduate programs. Many of these resources can help you teach the hospice/palliative/supportive sphere of care within the AACN Essentials. Visit often for new material and announcements!

Faculty and Student Access to Undergraduate/New Graduate and Graduate Curricula

[Access the Curricula](#)

Recorded Sessions for Faculty

[View Recordings](#)

Resources

[Podcasts](#)



[Case Studies](#)



[Simulation](#)



[Publications](#)



Evaluation Resources

[Palliative Care Knowledge](#)



[Perceived Competence to Provide Palliative Care](#)



[Palliative Care Competence](#)



[Publications](#)



Lippe, M.P., Wingett, G., Davis, A., Jizba, T., Ehrlich, O., Cormack, C., Fasolino, T., Glover, T.L., Meskis, S., LeBlanc, R.G., Weiss, D., Kirkpatrick, A.J. Instruments for Evaluating Student Learning Outcomes in Palliative Care: A Literature Review. *Journal of Hospice & Palliative Nursing*, PAP. DOI: 10.1097/NJH.0000000000001051