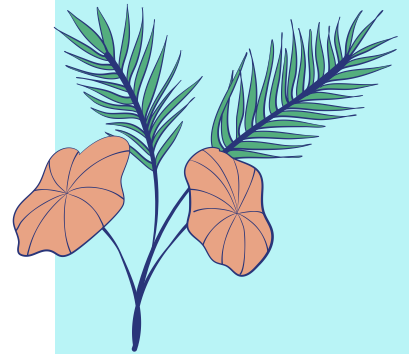


# Hawaii

MARCH 13-14, 2025



## ELNEC SUMMIT WAIKOLOA, HAWAII



### COURSES OFFERED:

- APRN ADULT
- APRN PEDIATRIC
- CORE
- GERIATRIC
- PEDIATRIC
- COMMUNICATION





# Advancing Palliative Care

## ABOUT ELNEC

The End-of-Life Nursing Education Consortium (ELNEC) project is a national and international education initiative to improve palliative care, in collaboration with City of Hope in Duarte, CA. and the American Association of Colleges of Nursing (AACN) in Washington, DC. The project provides training in palliative care with essential information to nursing students and practicing nurses, including undergraduate and graduate nursing faculty, continuing education providers, staff development educators, specialty nurses in pediatrics, oncology, critical care, geriatrics, and advanced practice nurses. ELNEC also welcomes other health care professionals.



Want to learn more about ELNEC? Visit [www.aacnnursing.org/ELNEC](http://www.aacnnursing.org/ELNEC) or join our social media.



## ELNEC SUMMIT OVERVIEW

The summit offers multiple courses simultaneously. Participants choose one course to attend.

### Intended Audience for APRN Adult & APRN Pediatric

Masters, PhD, or DNP prepared APRNs (nurse practitioners, clinical nurse specialists, midwives, and nurse anesthetists).

### Intended Audience for Communication, Core, Geriatric & Pediatric

While ELNEC is developed by nurses for nurses, we welcome all nurses, social workers, physicians, chaplains, and volunteers etc., who have an interest in palliative care.

## CONFERENCE PRICING

March 13-14, 2025	EARLY BIRD Ends December 29 <sup>th</sup>	STANDARD Ends February 7 <sup>th</sup>	LATE REGISTRATION Registration will close March 2 <sup>nd</sup>
APRN Adult	\$650	\$700	\$750
APRN Pediatric			
Communication	\$550	\$600	\$650
Core			
Geriatric			
Pediatric			

### Additional Discounts:

- **Schools of Nursing (SON) Faculty:** \$100 off when code **SONFACULTY** is applied
- **Multiple Colleague:** \$50 off each registration, if 3 or more colleagues attend from:  
*Choose One Option*
  1. The same institution
  2. The same professional nursing organization (AACN, HPNA, NBNA, ONS, etc.)Email [elnec@coh.org](mailto:elnec@coh.org) for a discount code. You will need to provide the names of the colleagues attending with you.

## CE Information

Provider approved by the California Board of Registered Nursing, BRN Provider #: CEP 13380 for **12+ contact hours\*** for Summit courses (CE Provider: City of Hope National Medical Center/Beckman Research Institute).

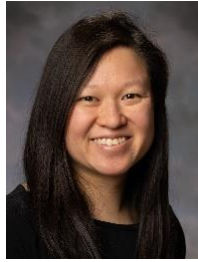
\*subject to change & must be present all days to receive CEs

[REGISTER HERE](#)



# ELNEC FACULTY

**Alice Bass, MSN, APRN,  
CPNP-PC**  
Pediatric Nurse Practitioner  
Nationwide Children's  
Columbus, OH



**Vanessa Battista, MS, RN,  
CPNP**  
Senior Nursing Director,  
Palliative Care  
Dana Farber Cancer Institute  
Boston, MA



**Carrie L. Cormack, DNP, APRN,  
CPNP-BC**  
Lead Palliative Care Faculty,  
Associate Professor, College of  
Nursing  
Medical University of South  
Carolina  
Charleston, SC



**Patrick J. Coyne, MSN, ACHPN,  
ACNS-BC, FPCN, FAAN**  
Clinical Nurse Specialist,  
Assistant Professor  
Director, Palliative Care  
Medical University of South  
Carolina  
Charleston, SC



**Connie Dahlin, APRN-BC,  
ACHPN®, FPCN, FAAN**  
Director, Professional Practice  
Palliative Care Consultant  
Hospice and Palliative Nurses  
Association  
Boston, MA



**Laura Fennimore, DNP, RN,  
NEA-BC**  
University of Pittsburgh School  
of Nursing Professor  
Pittsburgh, PA



**Betty Ferrell, PhD, RN, MA,  
FAAN, FPCN, CHPN**  
Principal Investigator, ELNEC  
Project Director, Nursing  
Research & Education  
City of Hope  
Duarte, CA



**Amy Haskamp, MSN, RN,  
PCNS-BC, CPON®**  
Pediatric Palliative Care  
Riley Hospital for Children  
at IU Health Hospital  
Indianapolis, IN



**Sarah Lowry, DNP, ACNP-BC,  
AOCNP, ACHPN**  
Associate Professor  
Oregon Health & Science  
University  
Portland, Oregon



**Judith Paice, PhD, RN, FAAN**  
Director, Cancer Pain Program  
Northwestern University  
Feinberg, School of Medicine  
Chicago, IL



**Shila Pandey, DNP, AGPCNP-BC, ACHPN**, Nurse Practitioner, Memorial Sloan Kettering Cancer Center  
Adjunct Instructor, New York University Rory Meyers College of Nursing  
New York, NY



**Dorothy Wholihan, DNP, AGPCNP-BC, ACHPN, FAAN**  
Special Projects Coordinator/  
Nurse Practitioner  
JJ Peters Veteran's Medical Center  
Clinical Associate Professor  
New York University  
New York, NY



## ELNEC TEAM

**Haley Buller, MSHSC**  
Admin Program Manager  
Nursing Research and Education  
City of Hope  
Duarte, CA



**Lilian Correa**  
Coordinator  
City of Hope  
Duarte, CA



**Andrea Garcia-Ortiz, MBA**  
Supervisor  
City of Hope  
Duarte, CA



**Maribel Tejada, BS**  
Senior Coordinator  
City of Hope  
Duarte, CA



**Ryan Tejada, BS**  
Senior Coordinator  
City of Hope  
Duarte, CA





# CONFERENCE CENTER & ACCOMODATIONS

## Conference Center

Waikoloa Beach Marriott Resort & Spa  
69-275 Waikoloa Beach Drive  
Waikoloa, HI 96738-5711  
(808) 886-6789

## Hotel Reservations

Hotel and travel expenses are the responsibility of the participant. A block of rooms at a discounted rate have been reserved at the Waikoloa Beach Marriott Resort & Spa. The Waikoloa Beach Marriott is pleased to offer the use of our online group reservations system powered by Passkey. All reservations will be made, modified or canceled through Passkey. The Passkey link will be emailed to participants upon registration completion.



## Things to do While Visiting the Area

Check out the area attractions, entertainment, shopping and other activities around the hotel by visiting <https://www.marriott.com/en-us/hotels/koamc-waikoloa-beach-marriott-resort-and-spa/experiences/>. Take advantage of networking with fellow healthcare providers while sightseeing before or after the conference sessions.



# CONFERENCE OVERVIEW

**Day One: Thursday, March 13, 2025 – 8:00AM – 4:00PM MDT**

APRN Adult	APRN Pediatric	Core	Communication	Geriatric	Pediatric
Introduction to Palliative Nursing Advanced Pain Management Communication Final Hours	Introduction to Palliative Nursing Advanced Pain Management Communication Final Hours	Introduction to Palliative Nursing Pain Communication Loss, Grief & Bereavement Self-Care	Domain 2: Physical Aspects of Care (Pain and Symptoms) Lab Domain 3: Psychological and Psychiatric Aspects of Care Lab Domain 4: Social Aspects of Care Lab	Introduction to Geriatric Nursing Communication Pain Loss, Grief & Bereavement	Introduction to Palliative Nursing Communication Loss, Grief & Bereavement Self-Care Pain Symptom

**Day Two: Friday, March 14, 2025 – 8:00AM – 3:30PM MDT**

APRN Adult	APRN Pediatric	Core	Communication	Geriatric	Pediatric
Symptoms Education/Teaching Strategies Breakout Sessions Improving Quality in Palliative Care Palliative APRN Leadership & Well-Being	Symptoms Education/Teaching Strategies Breakout Sessions Improving Quality in Palliative Care Palliative APRN Leadership & Well-Being	Education/Teaching Strategies Symptoms Ethics Final Hours	Domain 6: Cultural Aspects of Care Domain 5: Spiritual, Religious and Existential Aspects of Care Lab Domain 7: Care of the Patient Nearing the End of Life Domain 8: Ethical and Legal Aspects of Care	Ethics Culture Symptoms Final Hours Education/Teaching Strategies	Education/Teaching Strategies Ethics Neonatal Final Hours